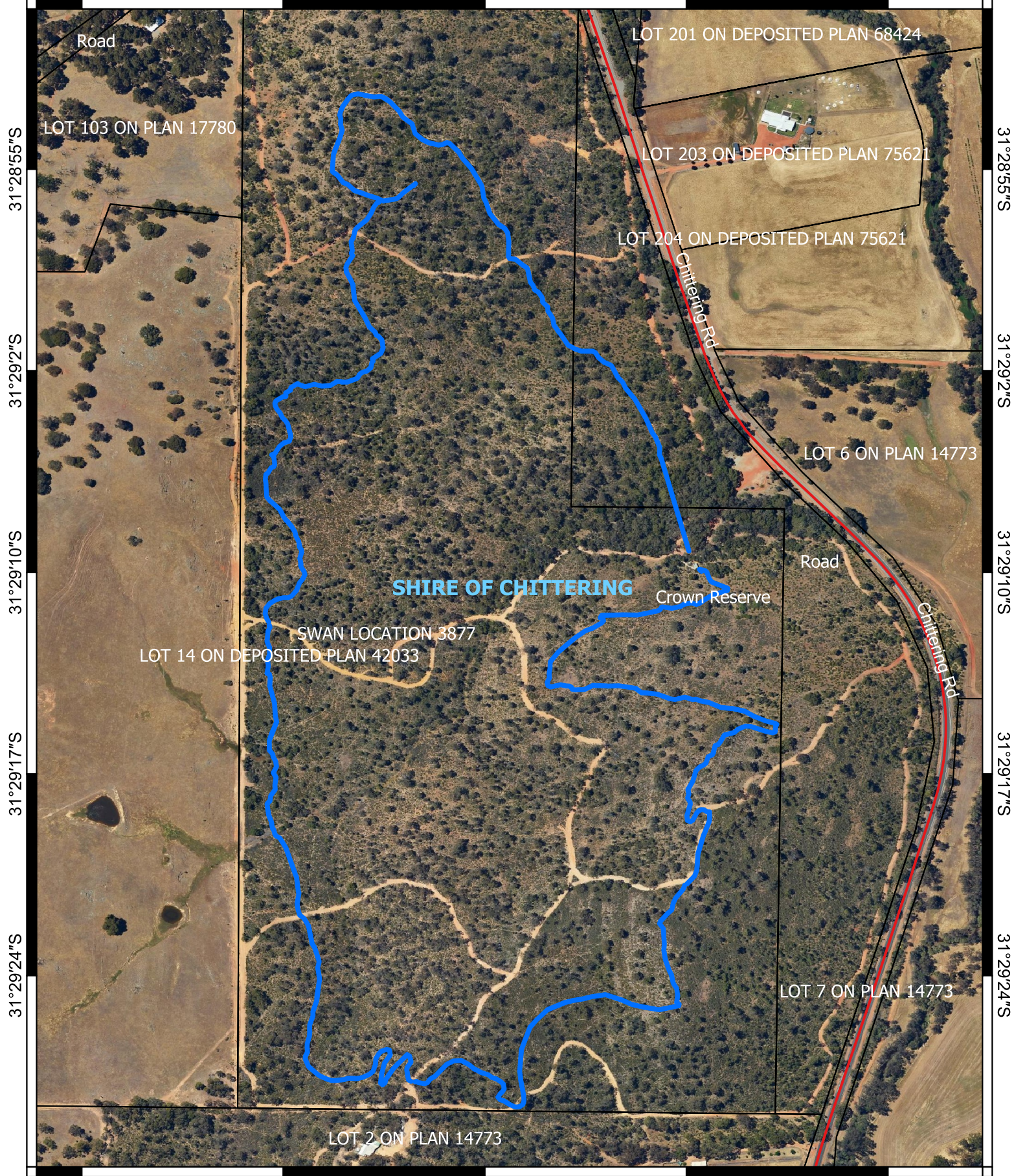


# CPS 10547/1 - Map

116°6'29"E      116°6'36"E      116°6'43"E      116°6'50"E      116°6'58"E



116°6'29"E      116°6'36"E      116°6'43"E      116°6'50"E      116°6'58"E

**Legend**

- CPS areas applied to clear
- Land Tenure (LGATE\_226) - SLIP
- Local Government Authorities

**Roads**

- Main

0      100      200      300 m

1:3,500

Projection: GDA2020

GOVERNMENT OF  
WESTERN AUSTRALIA